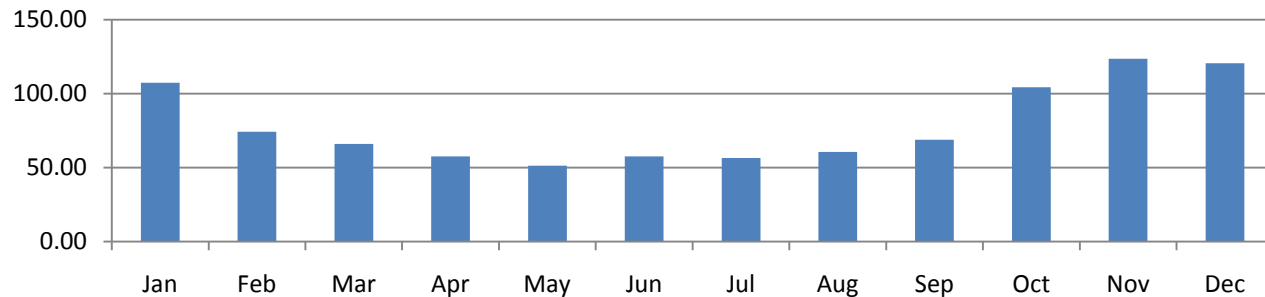


Durlston rainfall from 1988 (mm)

	Jan	Feb	Mar	Apr	May	Jun	Jul	Aug	Sep	Oct	Nov	Dec	Total
1988	168.0	63.4	113.7	49.7	28.1	29.3	78.8	79.4	70.1	122.7	34.6	33.7	871.5
1989	35.2	65.6	86.2	77.8	4.4	18.4	15.7	36.7	41.3	123.7	60.3	178.4	743.7
1990	104.9	185.0	9.6	41.6	13.5	31.2	17.9	28.9	21.4	122.1	67.5	67.8	711.4
1991	98.2	30.9	88.3	47.8	8.8	106.7	95.0	8.2	53.8	73.1	94.7	41.1	746.6
1992	29.9	34.3	50.2	90.2	21.4	30.5	68.6	125.4	105.9	96.2	153.9	95.9	902.4
1993	116.8	8.5	21.1	97.3	54.6	94.7	75.2	46.9	121.8	147.7	74.4	233.1	1092.1
1994	163.6	122.9	63.1	73.7	124.0	27.9	33.3	44.6	94.3	132.4	117.1	133.5	1130.4
1995	173.8	147.5	44.2	44.4	26.9	10.3	61.6	5.4	155.0	58.2	130.8	121.0	979.1
1996	67.7	82.3	72.0	42.9	92.6	62.5	17.8	74.8	26.4	93.9	166.5	42.6	842.0
1997	29.9	98.3	50.0	24.5	56.1	94.9	16.9	125.7	19.6	101.3	167.4	104.9	889.5
1998	140.9	14.5	112.4	81.2	28.0	76.7	60.1	16.4	140.0	129.4	127.3	118.4	1045.3
1999	118.6	38.8	44.2	83.1	19.1	68.2	9.3	71.8	136.7	66.0	47.6	205.3	908.7
2000	30.0	80.1	31.8	139.3	90.4	25.8	41.4	28.8	100.6	159.8	217.4	159.7	1105.1
2001	143.1	79.7	166.6	100.5	17.1	27.7	46.8	30.5	39.0	150.7	47.8	44.0	893.5
2002	85.5	106.7	62.8	29.0	101.9	35.8	80.6	39.8	132.8	106.4	285.5	182.0	1248.8
2003	103.7	59.6	45.2	47.6	52.4	66.1	50.8	21.3	8.3	96.0	158.8	165.9	875.7
2004	127.8	47.8	62.7	79.5	29.7	33.1	52.7	67.1	71.0	149.2	32.7	82.5	835.8
2005	67.7	22.4	59.3	70.8	47.8	78.3	69.0	76.9	42.4	141.8	87.6	70.0	834.0
2006	34.2	67.3	63.9	27.9	126.6	23.6	38.4	28.1	52.6	97.5	138.1	113.4	811.6
2007	94.1	125.5	74.4	2.5	114.2	99.7	160.0	65.4	25.0	44.5	92.0	128.5	1025.8
2008	124.3	47.9	120.7	56.9	52.9	39.9	82.6	85.2	75.4	103.1	102.3	39.4	930.6
2009	112.9	101.3	61.7	34.2	39.1	43.2	76.1	25.6	50.4	77.4	222.3	157.4	1001.6
2010	75.1	94.8	66.8	47.0	17.1	39.7	31.4	93.2	33.0	89.0	103.3	55.5	745.9
2011	109.6	62.5	30.5	5.1	28.6	69.8	41.9	75.5	62.1	37.5	32.9	112.4	668.4
2012	57.7	22.8	23.2	118.7	54.1	149.4	102.7	55.3	50.6	133.4	152.1	171.9	1091.9
2013	158.4	41.2	67.2	46.0	43.4	40.4	32.8	73.6	45.3	132.7	83.9	221.7	986.6
2014	231.3	172.2	58.2	64.7	78.0	24.7	24.3	89.8	2.4	148.5	157.6	46.4	1098.1
2015	142.9	64.5	23.6	59.0	51.8	39.9	80.1	139.1	82.5	55.7	121.8	85.5	946.4
2016	200.1	77.7	91.9	38.5	36.8	117.3	6.1	62.9	79.2	51.8	204.3	43.8	1010.2
2017	117.6	77.2	59.0	17.2	63.0	92.4	138.8	57.5	99.3	71.2	52.7	117.8	963.5
2018	110.6	62.2	112.0	67.2	32.8	3.7	32.2	57.6	37.9	52.8	120.0	168.0	857.0
2019	44.8	78.5	91.0	55.9	20.2	75.8	28.6	53.1	93.4	138.3	128.3	176.6	984.4
2020	108.9	155.6	66.6	38.0	12.3	28.7	42.4	75.6	27.5	197	83.9	176.55	1013.1
No years	33	33	33	33	33	33	33	33	33	33	33	33	33
Rolling													
30 year mean	107.32	74.18	66.15	57.69	51.39	57.58	56.58	60.70	68.80	104.42	123.50	120.49	948.79
Max	231.3	185.0	166.6	139.3	126.6	149.4	160.0	139.1	155.0	197.0	285.5	233.1	1248.8
Min	29.9	8.5	9.6	2.5	4.4	3.7	6.1	5.4	2.4	37.5	32.7	33.7	668.4

30 year mean rainfall mm



Annual rainfall mm

